

VERSION

8

# Operation Guide



AUDIO & VIDEO MIXING  
DJ SOFTWARE

stanton  
DJC.4



## Table of Contents

<b>INSTALLATION.....</b>	<b>3</b>
Firmware & Drivers .....	3
VirtualDJ 8 Setup .....	3
Advanced Setup .....	4
<b>LAYOUT .....</b>	<b>5</b>
<b>A. MIXER .....</b>	<b>6</b>
<b>B. DECK CONTROLS .....</b>	<b>8</b>
<b>C. ADVANCED DECK CONTROLS .....</b>	<b>9</b>
Effects.....	9
Loops .....	10
Hotcues & Samples.....	11
<b>D. FRONT .....</b>	<b>11</b>
<b>E. REAR.....</b>	<b>12</b>
<b>Advanced Audio Setup .....</b>	<b>13</b>
External sources.....	13
Timecode.....	14
Microphone & Recording.....	15

# INSTALLATION

## Firmware & Drivers

Install the latest **ASIO drivers** (for Windows only) of the unit from <http://www.stantondj.com/stanton-controllers-systems/djc4.html>

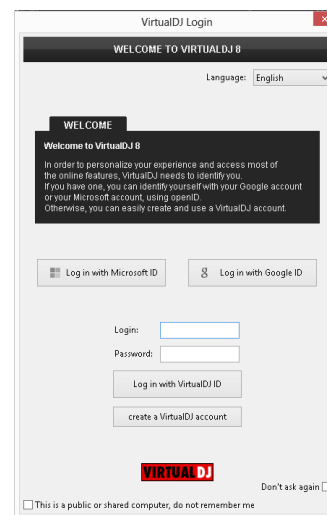
Drivers are not required for Mac OSX computers.

## VirtualDJ 8 Setup

Download and install VirtualDJ 8 from <http://www.virtualdj.com/download/index.html> (in case you have not done already)

Once VirtualDJ 8 is launched, a Login Window will appear. Login with your virtualdj.com account. A **Pro Infinity**, a **PLUS Controller** or a **Subscription License** is required to use the Stanton DJC.4. Without any of the above Licenses, the controller will operate for 10 minutes each time you restart VirtualDJ 8.

<http://www.virtualdj.com/buy/index.html>



A **detection** window will appear next, asking to use or not the **pre-defined audio setup** with the built-in sound card of the Stanton DJC.4. You can still change that from Settings->AUDIO tab.



The unit is now **ready** to operate.

## Advanced Setup

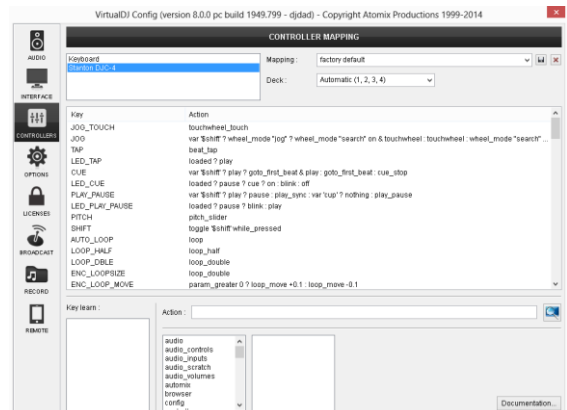
### MIDI Operation

The unit should be visible in the **CONTROLLERS** tab of Config and the **“factory default”** available/selected from the Mappings drop-down list.

The factory default Mapping offers the functions described in this Manual, however those can be adjusted to your needs via VDJ Script actions.

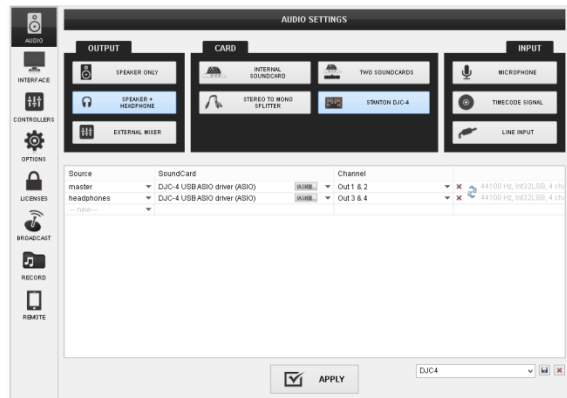
Find more details at

<http://www.virtualdj.com/wiki/VDJscript.html>



### AUDIO Setup

The unit has a **pre-defined** Audio setup and a **special button** in the AUDIO tab of Config to provide that. Alternative Audio setups can be applied in the same window (see [Advanced Audio Setup](#)).



Please read the manual of the unit for further connections/capabilities and setups.

<http://www.stantondj.com/pdf/products/controllers/djc4/DJC.4ManualV1.1.pdf>

For further VirtualDJ settings and features please refer to the User Guides of VirtualDJ 8.

<http://www.virtualdj.com/wiki/PDFManuals.html>

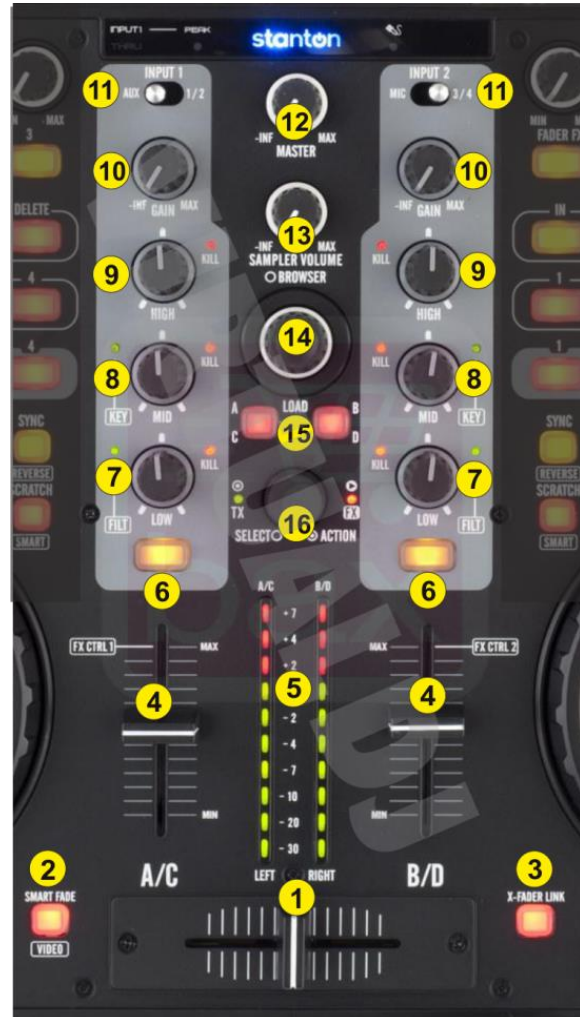
# LAYOUT



- S. SHIFT.** Press and hold this button to access secondary functions (mainly in white box lettering) of other controls on the Stanton DJC.4

## A. MIXER

- CROSSFADER.** Blends audio between the channels assigned to the left and right side of the crossfader. The channel can be assigned using the Crossfader channel assign button from the default 4 Decks skin of VirtualDJ.  
Hold **SHIFT** down and then use this fader to control the **Video Crossfader** of VirtualDJ.
- SMART FADE.** Press this button to enable/disable the Auto Video Crossfader mode. When enabled, the video transition between left and right assigned decks will be handled automatically by VirtualDJ and the selected Video Transition.
- X-FADER LINK.** Press this button to enable/disable the Link Video Crossfader mode. When enabled, the Audio Crossfader will also move Video Crossfader of VirtualDJ.
- VOLUME.** Adjust the Output volume of the left and right selected deck. Note that the Volume of the decks will be controlled regardless of the INPUT switcher (11) position.



- CH/MASTER VU.** By default the VU meters will show the Output Volume of the **Master Output**, and will show the Output Level of the corresponding deck if this is selected by the PFL/CUE buttons (6).
- CUE/PFL.** Press these buttons to send this channel's pre-fader signal to the Cue Channel for monitoring. When engaged, the button will be lit.  
Hold **SHIFT** down and then press any of the CUE/PFL buttons to toggle between the 2 different **VU meters display modes** as described above.
- EQ LOW.** Adjusts low (bass) frequencies of the corresponding channel in the software or hardware Input. **Push** the knob to completely cut the Low frequencies (**Kill**). The red led will indicate the Kill status.  
Hold **SHIFT** down and then use this knob to adjust the **Low/High Pass Filter** for this deck. Hold **SHIFT** down and then push the knob to **reset Filter** to its zero (off) position (green led will be off)

8. **EQ MID.** Adjusts mid (middle) frequencies of the corresponding channel in the software or hardware Input. **Push** the knob to completely cut the Mid frequencies (**Kill**). The red led will indicate the Kill status.  
Hold **SHIFT** down and then use this knob to adjust the **key** of the loaded track for this deck. Hold **SHIFT** down and then push the knob to **reset Key** to its original value (green led will be off)
9. **EQ HIGH** Adjusts high (treble) frequencies of the corresponding channel in the software or hardware Input. **Push** the knob to completely cut the High frequencies (**Kill**). The red led will indicate the Kill status.
10. **GAIN.** Adjusts the audio level (gain) of the corresponding channel in the software or hardware Input.
11. **INPUT SOURCE SELECTOR.** Use these switchers to determine which one of the 4 available Inputs (AUX, 2xLINEIN and Microphone) will be routed to the 2 stereo input channels of the Stanton DJC.4 built-in interface.
12. **MASTER LEVEL:** Adjusts the Master Output Volume (Hardware operation. Movement will not be visible on the VirtualDJ GUI, nor will control the internal mixer Master Volume)
13. **SAMPLER VOLUME:** Adjusts the Master Output Volume of the VirtualDJ Sampler
14. **BROWSE KNOB.** Scrolls through Folders or Files. Hold **SHIFT** down and then use this encoder to cycle through the available **Sideview windows** (Automix, Sidelist, Karaoke, Sampler and Clone/Shortcuts)  
  
**BROWSE PUSH.** Push the encoder to toggle focus between the Folders and the Songs List. **Push and hold** the encoder for more than 1 second to **show/hide** the **Sideview** Browser window.  
If focus is on the Folders List, hold **SHIFT** down and then push the encoder to **expand/collapse Subfolders**.  
If focus is on the Songs List, hold **SHIFT** down and then push the encoder to **load** the selected track from the Songs List to the **Automix List**.
15. **LOAD.** Press these buttons to **load** the selected track from the Browser to the left or right selected deck  
Hold **the same buttons** down for more than 1 second, to **unload** the same deck  
Hold **SHIFT** down and then use these buttons to set focus to the **previous/next Browser window**.
16. **TX/FX.** Use this encoder to **select** the **Video Transition**. **Push** the encoder to **trigger** the selected Video Transition. While Transition is triggered use the encoder to adjust its 1<sup>st</sup> parameter. The TX led will be lit while the video transition is activated.  
  
Hold **SHIFT** down and then use this encoder to **select** the **Master Video Effect**. **Push** the encoder to **enable/disable** the selected Master Video Effect. While the Master Video Effect is enabled use the encoder to adjust its 1<sup>st</sup> parameter. The FX led will be lit if the selected Master Video Effect is enabled.

## B. DECK CONTROLS

**17. PLAY.** Plays / Pauses the track. Hold **SHIFT** down and then press this button to pause the track if playing or **play and synchronize** this deck to the Master Deck at the same time.

**18. CUE.** When the Deck is paused, you can set a Cue Point by moving the Platter to place the Audio Pointer at the desired location and then pressing the Cue Button.

During playback, you can press the Cue Button to return the track to this Cue Point. (If you did not set a Cue Point, then it will return to the beginning of the track.).

If the Deck is paused, you can press and hold the Cue Button to play the track from the Temporary Cue Point. Releasing the Cue Button will return the track to the temporary Cue Point and pause it. To continue playback without returning to the Temporary Cue Point, press and hold the Cue Button, then press and hold the Play Button, and then release both buttons.

Hold **SHIFT** down and then press this button to move the track at the beginning.



**19. TAP.** Press this button to **manually tap** the tempo of the loaded track. Hold **SHIFT** down and then press this button to set this deck as **Master Deck**.

**20. JOG.** Touch sensitive jogwheel. Use the jogwheel to **scratch** (if Vinyl mode is selected) or **pitch bend**. Hold **SHIFT** down and then use the jogwheel to **fast seek** through the track.

The Jogwheel also offers Loop In, Loop Out point and Loop Move adjustments (see LoopIn, LoopOut and Loop buttons)

**21. SCRATCH.** Press this button to set the Jogwheel to **Vinyl** (Scratch) or **CD** (Bend) **mode**. In Vinyl mode, use the outer part of the Jogwheel to bend (temporary speed up – slow down the tempo of the track).

Hold **SHIFT** down and then press this button to enable/disable **Smart Scratch**. When Smart is enabled the sound will be muted if the deck is scratched backwards.

**22. SYNC.** Press this button to **synchronize** and automatically match the corresponding Deck's tempo with the opposite Deck's (or the Master Deck's if using a 4 decks Skin) tempo and phase. Hold **SHIFT** down and then press this button to play the track in **reverse**.

- 23. DECK SELECT.** Switch Left decks (1 and 3) and Right Decks (2 and 4). The left side of the Stanton DJC.4 can control VirtualDJ decks 1 or 3, and the right side can control VirtualDJ decks 2 or 4.
- 24. KEYLOCK.** Press this button to "**lock**" the track's pitch to its original **key**. The track's tempo will remain at the speed designated by the Pitch Fader.  
Hold **SHIFT** down and then press this button to enable **Beatlock** on this deck. If Beatlock is enabled, the decks are kept synchronized even when moving the pitch, scratching etc.
- 25. PITCH BEND +/-.** Press and hold these buttons down to **temporary slowdown/speed-up** the **tempo** of the track. When released the tempo of the track will be back to the value defined by the pitch fader.  
Hold **SHIFT** down and then use these buttons to select the previous/next available **range** for the **Pitch Fader** (to  $\pm 6\%$ ,  $\pm 8\%$ ,  $\pm 10\%$ ,  $\pm 12\%$ ,  $\pm 20\%$ ,  $\pm 25\%$ ,  $\pm 33\%$ ,  $\pm 50\%$ , and  $\pm 100\%$ ).
- 26. PITCH.** Adjust the track's playback speed (tempo).  
The actual pitch fader will not alter the pitch of the track if the actual pitch and the software pitch value do not match (software soft-takeover, ghost fader visible on the GUI). In most cases this may happen if SYNC is prior pressed or switching decks and the other deck is having a different pitch software value.

## C. ADVANCED DECK CONTROLS

### Effects

The FX CONTROL section offers control of 3 different Effect Slots. The Slot selection is made by pushing the FX SELECT (27) encoder and the Leds of the FXON (31), FX2ON (33) and FX3ON (34) buttons will indicate which Effect Slot is selected

- 27. FX SELECT.** Use this encoder to **select** the Effect of FX Slot 1, 2 or 3. **Push** the encoder to **select** which **FX Slot** of VirtualDJ you wish the whole FX Section to control.  
Hold **SHIFT** down and then push the encoder to **show/hide** the **FX GUI** of the selected Effect.



- 28. FX 1 knob.** Use this knob to control the **1<sup>st</sup> parameter** of the selected Effect. If FADERFX (32) is enabled the knob will not have any function
- 29. FX 2 knob.** Use this knob to control the **2<sup>nd</sup> parameter** of the selected Effect. If FADERFX (32) is enabled the knob will not have any function

- 30. FX 3 knob.** Use this knob to control the **3<sup>rd</sup> parameter** of the selected Effect
- 31. FXON button.** Press this button to **trigger** the selected **Effect** of FX **Slot 1**. The Led of this button will blink if the effect is enabled and will be lit if the 1<sup>st</sup> Slot is selected to be handled by the top knobs
- 32. FADERFX.** Press this button to enable/disable the FADERFX mode. If the FADERFX mode is enabled (led will blink), the 1<sup>st</sup> and 2<sup>nd</sup> parameters of the selected Effect will be controlled by the Volume Faders (4).
- 33. FX2ON button.** Press this button to **trigger** the selected **Effect** of FX **Slot 2**. The Led of this button will blink if the effect is enabled and will be lit if the 2<sup>nd</sup> Slot is selected to be handled by the top knobs
- 34. FX3ON button.** Press this button to **trigger** the selected **Effect** of FX **Slot 3**. The Led of this button will blink if the effect is enabled and will be lit if the 3<sup>rd</sup> Slot is selected to be handled by the top knobs

## Loops

- 35. LOOP ENC.** Use this encoder to **half/double** the **size** of the loop. **Push** the encoder to **trigger** a loop of the selected size (in beats). Hold **SHIFT** down and then use the encoder to **move** the loop forward or backwards by 10% of its size. Hold **SHIFT** down and then push the encoder to toggle between the Normal and **Loop Roll mode**.



When Loop Roll mode is enabled, the triggered loops will apply temporary, and the track will return to the position it would have been if the loop was never triggered.

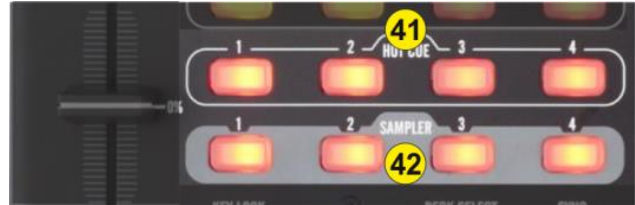
- 36. LOOP LENGTH +/-.** Press these buttons to **half/double** the size (in beats) of the Loop.
- 37. LOOP IN.** Press this button to **set a Loop In** (Entry point). When a loop is enabled, hold **SHIFT** down and then press this button to set the Jogwheel to **Loop In mode** and (fine) adjust the Loop In point using the jog. The Led of the button will blink to indicate the Loop In Wheel mode. Press again to return the Jogwheel to Jog mode.
- 38. LOOP OUT.** Press this button to **set a Loop Out** (Exit point). When a loop is enabled, hold **SHIFT** down and then press this button to set the Jogwheel to **Loop Out mode** and (fine) adjust the Loop Out point using the jog. The Led of the button will blink to indicate the Loop Out Wheel mode. Press again to return the Jogwheel to Jog mode.
- 39. LOOP ON.** Press this button to trigger a Loop of the selected size or exit the loop if triggered. When a loop is enabled, hold **SHIFT** down and then press this button to set the Jogwheel to **Loop Move mode** and (fine) move the Loop backwards or forward

using the jog. The Led of the button will blink to indicate the Loop Move Wheel mode. Press again to return the Jogwheel to Jog mode.

- 40. LOOP DELETE.** Press this button to **exit** the loop. Hold **SHIFT** down and then use this button to trigger the last triggered loop (**reloop**)

## Hotcues & Samples

- 41. HOTCUE (1-4).** Use these 4 buttons to **assign a Hot Cue Point (1 to 4) or return the track to that Hot Cue Point.** When a Hot Cue Button is unlit, you can assign a Hot Cue Point by pressing it at the desired point in your track.



Once it is assigned, the Hot Cue Button will light. To return to that Hot Cue Point, simply press it.

Press and hold **SHIFT** and then press a Hot Cue Button to **delete** its assigned Hot Cue Point.

- 42. SAMPLE (1-4).** Use these 4 buttons to **trigger a Sample** from the selected Bank of VirtualDJ. If the selected bank has less than 5 samples (slots), both sides of the Stanton DJC.4 will control the same samples. If a bank has more than 4 samples (slots), the left side of the Stanton DJC.4 will control samples 1 to 4 and the right side samples 5 to 8.

Hold **SHIFT** down and then press a button to **stop** the corresponding sample (useful if the selected Sampler Trigger mode is set to Stutter or Unmute)

## D. FRONT



- 43. MIC INPUT.** Connect a Microphone to this Input.

- 44. MIC LEVEL.** Adjust the Volume of the Microphone Input of the Stanton DJC.4

- 45. MIC ON.** Turn On/Off the Microphone Input of the unit.

- 46. TOUCH SENSITIVITY.** Use these knobs to adjust the touch sensitivity of the left and right jogwheels.

- 47. XFADER CURVE.** Adjusts the slope of the crossfader curve. Turn the knob to the left for a smooth fade (mixing) or to the right for a sharp cut (scratching). The center position is a typical setting for club performances.
- 48. HEADPHONES MIX:** Turn to mix between Cue and Master in the Headphone channel. When all the way to the left, only channels routed to Cue will be heard. When all the way to the right, only the Master Output will be heard.
- 49. HEADPHONES LEVEL.** Adjusts the volume level of the headphone output.
- 50. HEADPHONES SOCKET.** Connect your 1/4" headphones to this output for cueing and mix monitoring.

## E. REAR



- 51. POWER:** While the DJC.4 can run very comfortably with USB bus power, in cases where your computer may not supply enough USB bus power, it may be necessary to connect an additional power supply. Use a proper power 6V DC adaptor to connect Stanton DJC.4 to a power outlet.
- 52. USB.** This USB connection sends and receives audio and control information from a connected computer.
- 53. MASTER OUTPUT (TRS/RCA):** Use standard RCA or TRS cables to connect this output to a speaker or amplifier system. The level of this output is controlled by the Master knob on the top panel.
- 54. LINE INPUTS.** Connect your audio sources to these inputs and can accept both line and phono-level signals.  
Use the **PC/THRU** switcher to send all Inputs directly to the master out (THRU) and mute the software output or to VirtualDJ (PC). See [Advanced Audio Setup](#)
- 55. AUX.** CD players, MP3 Player, Tablet Pad and other line level instruments may only be connected to this jack. Input volume will be controlled by the channel fader. The channel INPUT1 (11) selector switch must be in the "AUX".

## Advanced Audio Setup

The built-in audio interface of the Stanton DJC.4 offers **2 stereo inputs** and all 4 available Inputs, (AUX, 2xLINE and Microphone Input) can be routed either **directly to the Master Output** or **routed to VirtualDJ**, depending on the back **PC/THRU** switcher.

### External sources

Connect any CD player, Turntable or other media source to the Inputs 1/2 , 3/4 or AUX at the rear side of the unit. You can then choose one of the following ways to output those Inputs to the Master Output of the unit.

### Routing Inputs to VirtualDJ

Make sure the PC/THRU switcher at the back of the unit is set to **PC** position. Go to the AUDIO tab of VirtualDJ config and create the following audio setup.

Source	SoundCard	Channel		
master	DJC-4 USB ASIO driver (ASIO)	Out 1 & 2		44100 Hz, Int32LSB, 4 ch
headphones	DJC-4 USB ASIO driver (ASIO)	Out 3 & 4		44100 Hz, Int32LSB, 4 ch
line in 1	DJC-4 USB ASIO driver (ASIO)	In 1 & 2		44100 Hz, Int32LSB, 4 ch
line in 2	DJC-4 USB ASIO driver (ASIO)	In 3 & 4		44100 Hz, Int32LSB, 4 ch
-- new --				

*Line Inputs – Audio configuration*

Once the Line Inputs are set as above in the Audio setup, 2 AUX panels will appear on the 2 decks default skin. Click on the AUX buttons to route the external source to the left or right deck.

Use the smart buttons on the 4 decks default skin (assigned as deck left linein 1 and deck right linein 2)



Use the INPUT1 and INPUT2 (11) source selectors at the top panel of the unit to select which source you wish to use (AUX/LINE12 for the left and MIC/LINE34 for the right)

## Routing Inputs directly to the Master Output

This option is mainly used if you wish to directly output a media source (e.g. a CD player) without VirtualDJ to handle these inputs. Use the PC/THRU switcher at the back of the unit to route the external sources (at THRU position) or the software decks (at PC position) to the Master Output..

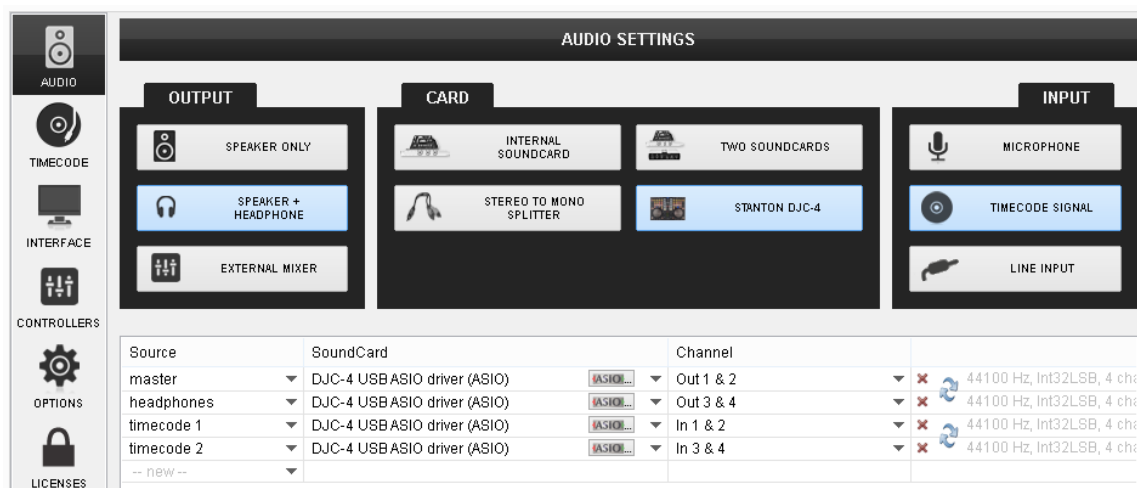
In this case, no special audio configuration is required (use the pre-defined that the special button offers)

Note that the mixer of the Stanton DJC.4 will not control the volume of the external sources (will not operate as a standalone mixer) except from the Master Volume knob. The mixer of the DJC.4 will still continue to control the software internal mixer, however once the THRU position is selected from the rear side, the sound output of the software decks will be muted

## Timecode

The Stanton DJC.4 is capable of **Timecode** setup and control (DVS).

Connect your CD players or your Turntables to the Line Inputs 1/2 and 3/4. Set the PC/THRU switcher (54) to the **PC position**. Go to the AUDIO tab of VirtualDJ config and create the following audio setup.



*Timecode – Audio configuration*

Once the Timecode Inputs are set as above in the Audio setup, the TIMECODE panels will appear at the SCRATCH center panel of the default 4 deck skin.

Use the ON buttons to enable the timecode control to any of the 4 software decks.

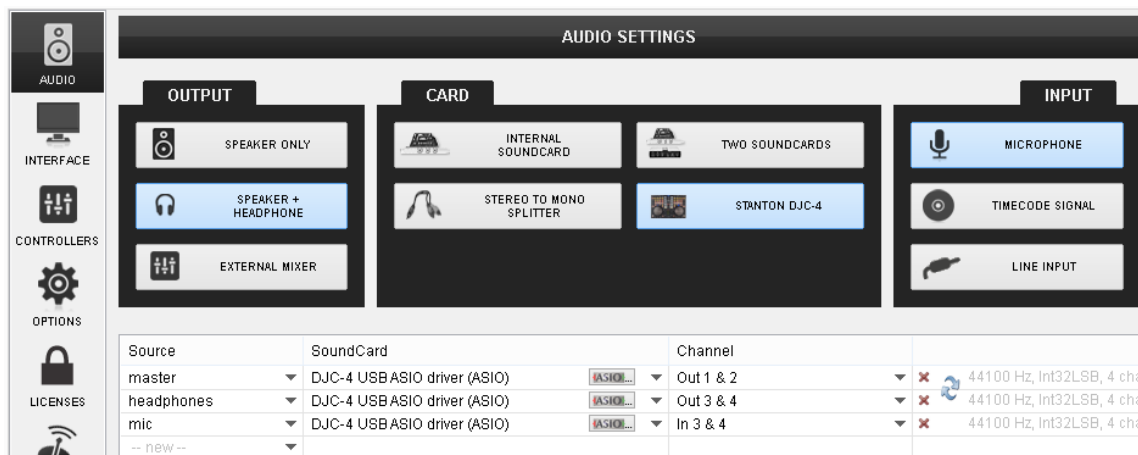


Note. Timecode function requires a Pro Infinity license

## Microphone & Recording

The Microphone Input of the Stanton DJC.4 is directly routed to the Master Output of the unit, therefore there is no reason to modify the audio configuration in order to use it properly.

However, in case you will need to record (or broadcast) the microphone along with your mixes, you will need to choose the **MIC** position from the **INPUT2** source selector (11) and manually create the following audio configuration by **adding a mic line** assigned to Input channels **3&4**.

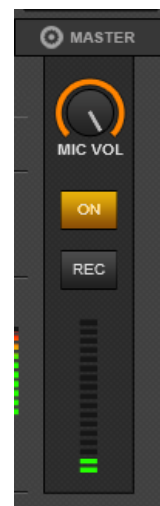


*Microphone recording – Audio configuration*

Set the PC/THRU back selector to the **PC position** and **enable the MIC** from the MASTER center panel.

Notice that the Microphone will still go through to the Master Output of the Stanton DJC.4 even if the MIC ON is disabled from the software.

To operate the microphone, you will still need to adjust its volume from the front panel and turn it on/off from the front switcher as well.



No special audio configuration is required in order to simply record your mixes with the Stanton DJC.4

## **Useful Links**

VirtualDJ web-page: <http://www.virtualdj.com>

VirtualDJ Support Center: <http://www.virtualdj.com/contact/index.html>

VirtualDJ 8 Operation Guides: <http://www.virtualdj.com/wiki/PDFManuals.html>

Stanton web-page: <http://www.stantondj.com/>

Stanton Support Center: <http://www.stantondj.com/contact-stanton.html>

Stanton DJC.4 product page: <http://www.stantondj.com/stanton-controllers-systems/djc4.html>

Stanton DJC.4 User Guide:

<http://www.stantondj.com/pdf/products/controllers/djc4/DJC.4ManualV1.1.pdf>

Hardware Integration Department



2014 - ATOMIX PRODUCTIONS

Reproduction of this manual in full or in part without written permission from Atomix Productions is prohibited.