

VERSION

8

# Operation Guide

# VIRTUAL DJ

AUDIO & VIDEO MIXING  
DJ SOFTWARE



## TRAKTOR KONTROL Z1



**Table of Contents**

<b>INSTALLATION</b> .....	3
Firmware & Drivers.....	3
VirtualDJ 8 Setup .....	3
Advanced Setup .....	4
<b>CONTROLLER OVERVIEW</b> .....	5
<b>A. MIXER</b> .....	6
<b>B. FRONT</b> .....	7
<b>C. REAR</b> .....	8

# INSTALLATION

## Firmware & Drivers

**Firmware:** Update the firmware of the unit to the latest version from [http://co.native-instruments.com/index.php?id=freeupdates#Traktor\\_Kontrol\\_Z1](http://co.native-instruments.com/index.php?id=freeupdates#Traktor_Kontrol_Z1)

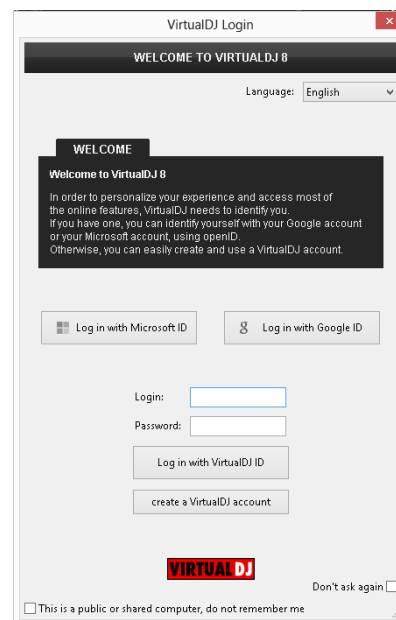
**Drivers:** Install the latest drivers from [http://co.native-instruments.com/index.php?id=freeupdates#Traktor\\_Kontrol\\_Z1](http://co.native-instruments.com/index.php?id=freeupdates#Traktor_Kontrol_Z1)

## VirtualDJ 8 Setup

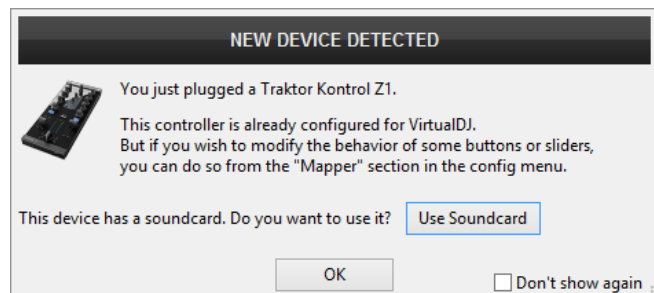
Download and install VirtualDJ 8 from <http://www.virtualdj.com/download/index.html> (in case you have not done already)

Once VirtualDJ 8 is launched, a Login Window will appear. Login with your virtualdj.com account. A **Pro Infinity**, **PRO Subscriber** or **PLUS License** is required to fully use the Native Instruments Traktor Kontrol Z1. Without any of the above Licenses, the controller will operate for 10 minutes each time you restart VirtualDJ.

<http://www.virtualdj.com/buy/index.html>



A **detection** window will appear next asking to use or not the **pre-defined audio setup** with the built-in sound card of Kontrol Z1. You can still change that from Settings->AUDIO tab.



The unit is now **ready** to operate with VirtualDJ.

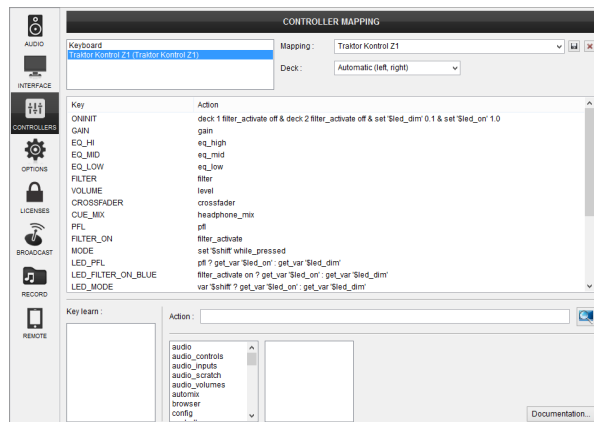
## Advanced Setup

### MIDI Operation

The unit should be visible in the **CONTROLLERS** tab of Config and the “**factory default**” available/selected from the Mappings drop-down list. The factory default Mapping offers the functions described in this Manual, however those can be adjusted to your needs via VDJ Script actions.

Find more details at

<http://www.virtualdj.com/wiki/VDJscript.html>

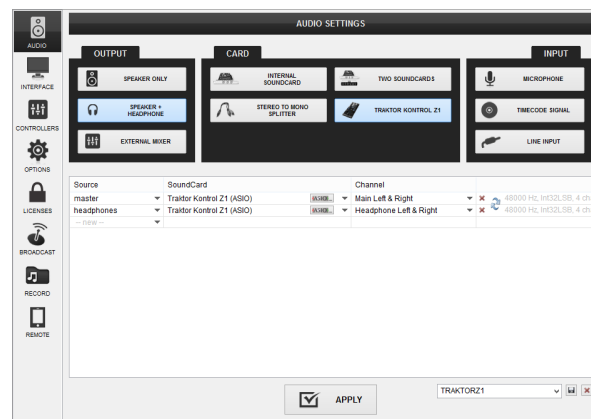


### AUDIO Setup

The unit has a **pre-defined** Audio setup and a **special button** in the AUDIO tab of Config to provide that.

Please read the installation guide and the manual of Kontrol Z1 for further Audio capabilities-setups.

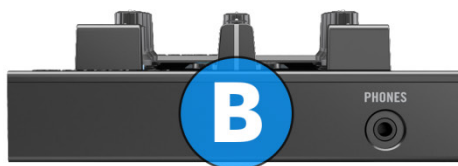
<http://www.native-instruments.com/en/products/traktor/traktor-for-ios/traktor-kontrol-z1/downloads/>



For further software settings please refer to the User Guides of VirtualDJ 8.

<http://www.virtualdj.com/wiki/PDFManuals.html>

# CONTROLLER OVERVIEW



**A. MIXER**



1. **CROSSFADER:** Blends audio between the left and right channels
2. **VOLUME:** Alter the sound of each deck.
3. **FILTER:** Press this button to activate resonance filter for this channels sound
4. **FILTER KNOB:** Turn this knob to adjust the amount of resonance filter applied on this channels sound. Middle position is off (pass through), turning left applies a low-pass filter, turning right applies a high-pass filter.

5. **EQ-LOW:** Adjust the low (bass) frequencies of the corresponding deck
6. **EQ-MID:** Adjust the middle (mid) frequencies of the corresponding deck
7. **EQ-HI:** Adjust the high (treble) frequencies of the corresponding deck
8. **GAIN:** Adjusts the audio level (gain) of the corresponding deck.
9. **MASTER VOLUME.** Adjust the level of the Master Output.
10. **HEADPHONES VOLUME:** Adjusts the Headphones (CUE) Output Volume
11. **HEADPHONES MIX:** Adjusts the mixing between CUE and MASTER output sound output on your headphones. All the way to the left is CUE sound output only, all the way to the right is MASTER sound output only.
12. **PFL:** Press this button to send this channel's pre-fader signal to the Cue Channel for monitoring. When engaged, the button will be lit
13. **MODE:** Operates as a SHIFT button, allowing you to access auxiliary commands on supported buttons/knobs
14. **VU METER:** Displays the intensity of master volume output

## B. FRONT



15. **HEADPHONES CONNECTOR:** Connect your headphones.

## C. REAR



- 16. POWER CONNECTOR:** Connect the optional power supply (PSU) of the unit.
- 17. USB CONNECTOR:** Connect a USB cable to establish communication between the device and your computer
- 18. MASTER OUTPUT CONNECTORS:** Use these connectors to connect your device on another mixer or an amplifier.

Hardware Integration Department



2015 - ATOMIX PRODUCTIONS INC

Reproduction of this manual in full or in part without written permission from Atomix Productions is prohibited.