

VERSION

8

# Operation Guide

# VIRTUALDJ

AUDIO & VIDEO MIXING  
DJ SOFTWARE



## TRAKTOR KONTROL F1



**Table of Contents**

<b>INSTALLATION</b> .....	3
Firmware & Drivers.....	3
VirtualDJ 8 Setup .....	3
Advanced Setup .....	3
<b>CONTROLLER OVERVIEW</b> .....	5
<b>A. FILTERS</b> .....	6
<b>B. VOLUMES</b> .....	6
<b>C. COMMANDS</b> .....	6
<b>D. PADS</b> .....	7

# INSTALLATION

## Firmware & Drivers

**Firmware:** Update the firmware of the unit to the latest version from [http://co.native-instruments.com/index.php?id=freeupdates#Traktor\\_Kontrol\\_F1](http://co.native-instruments.com/index.php?id=freeupdates#Traktor_Kontrol_F1)

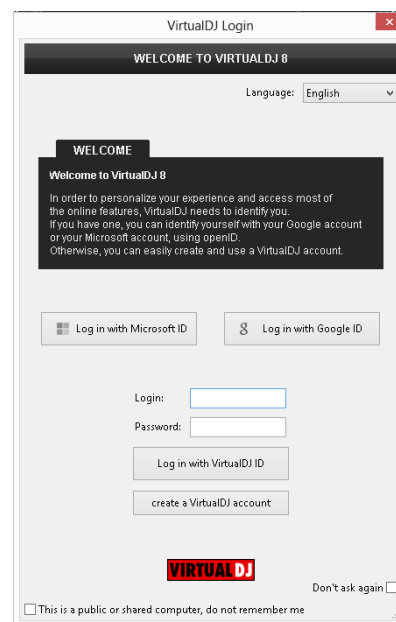
**Drivers:** Install the latest drivers from [http://co.native-instruments.com/index.php?id=freeupdates#Traktor\\_Kontrol\\_F1](http://co.native-instruments.com/index.php?id=freeupdates#Traktor_Kontrol_F1)

## VirtualDJ 8 Setup

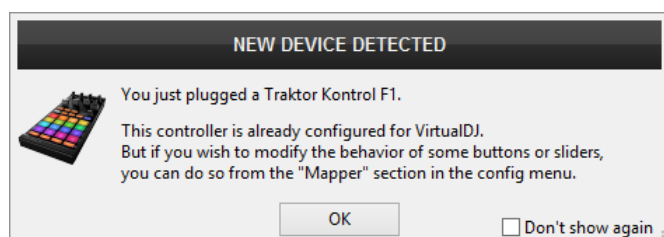
Download and install VirtualDJ 8 from <http://www.virtualdj.com/download/index.html> (in case you have not done already)

Once VirtualDJ 8 is launched, a Login Window will appear. Login with your virtualdj.com account. A **Pro Infinity, PRO Subscriber** or **PLUS License** is required to fully use the Native Instruments Traktor Kontrol F1. Without any of the above Licenses, the controller will operate for 10 minutes each time you restart VirtualDJ.

<http://www.virtualdj.com/buy/index.html>



A **detection** window will appear to inform you that your device has been detected properly.



The unit is now **ready** to operate with VirtualDJ.

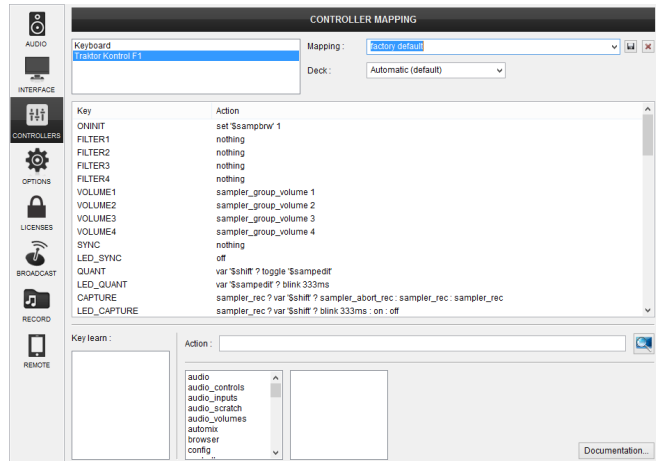
## Advanced Setup

## MIDI Operation

The unit should be visible in the CONTROLLERS tab of Config and the “factory default” available/selected from the Mappings drop-down list. The factory default Mapping offers the functions described in this Manual, however those can be adjusted to your needs via VDJ Script actions.

Find more details at

<http://www.virtualdj.com/wiki/VDJscript.html>



For further software settings please refer to the User Guides of VirtualDJ 8.

<http://www.virtualdj.com/wiki/PDFManuals.html>

# CONTROLLER OVERVIEW



## A. FILTERS

This section is not mapped within VirtualDj and the knobs can be used by the user to assign any operation they may need to via VDJ Script actions. Please find more details at <http://www.virtualdj.com/wiki/VDJscript.html>

## B. VOLUMES

These sliders control the volume of the first 4 Groups in each Sampler Bank.

## C. COMMANDS



1. **SYNC/MASTER Button.** It does not operate any pre-programmed function.
2. **QUANT/EDIT Button.** Hold down SHIFT (6) button and press this button once. The pads on the controller will start blinking. Press a pad button to open the loaded sample of the pad on the Sampler Editor.
3. **CAPTURE/DELETE Button.** Press the button one time to start recording a new sample. Press a second time to stop and save the recording of the sample. If you wish to cancel the recording, hold SHIFT (6) button first and then press this button again.
4. **PARAMETERS Display.** It shows the selected sample bank id, or the selected sample slot while SHIFT (6) button is pressed.
5. **PARAMETERS Knob.** This knob offers different functions depending on the status of SIZE (9) and BROWSE (10) buttons. If SIZE button is selected it controls the loop size of the selected sample. You can hold down SHIFT (6) and rotate the knob to change the selected slot if you need to control another slot. If BROWSE (10) button

is selected then it changes the current sample bank. You can hold down SHIFT(6) and turn the knob to change the selected sample slot if needed as well.

6. **SHIFT Button.** Hold down this button to operate the alternative functions of the various controller elements (usually presented with white letters inside a gray box).
7. **REVERSE/COLOR Button.** It does not operate any pre-programmed function.
8. **TYPE/PITCH Button.** Press this button to cycle between the different fire modes of the sampler: On/Off, Hold, Stutter & Unmute. Hold down the button and press a pad if you wish to change the fire mode of the selected sample only.
9. **SIZE/SPEED Button.** Press this button to change the mode of the PARAMETERS knob (5) so that it controls the loop size of the samples.
10. **BROWSE/MIDI Button.** Press this button to change the mode of the PARAMETERS knob (5) so that it controls the selected sampler bank.

## D. PADS



- A. **11-16 SAMPLER PAD Buttons.** Press these buttons to fire the samples loaded on the corresponding slots of the sampler. Hold down SHIFT (6) and press a pad to stop the specific sample from playing.
- B. **17-20 STOP Buttons:** Press these buttons to stop the samples playing on the same column. For instance press (17) to stop samples 1,5,9&13, press 18 to stop samples 2,6,10&14, e.t.c.

Hardware Integration Department



2015 - ATOMIX PRODUCTIONS

Reproduction of this manual in full or in part without written permission from Atomix Productions is prohibited.