

VERSION

8

Operation Guide



AUDIO & VIDEO MIXING
DJ SOFTWARE



behringer

CMD DC-1



atomix
PRODUCTIONS

SOUND TECHNOLOGY PROVIDER

Table of Contents

A. INSTALLATION	3
Firmware & Drivers	3
VirtualDJ 8 Setup	3
Advanced Setup	4
B. BROWSER.....	5
C. EFFECTS	6
D. SAMPLER	7

A. INSTALLATION

Firmware & Drivers

Firmware: No firmware update is currently available. However it is always advised to check Behringer website <http://www.behringer.com/EN/Products/CMD-DC-1.aspx>

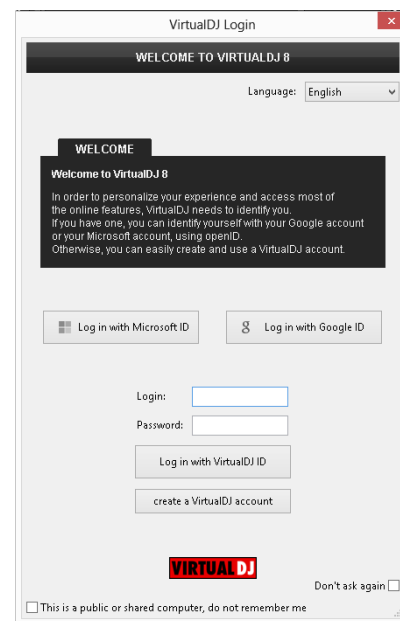
Drivers: No drivers are requires (class compliant device).

VirtualDJ 8 Setup

Download and install VirtualDJ 8 from <http://www.virtualdj.com/download/index.html> (in case you have not done already)

Once VirtualDJ 8 is launched, a Login Window will appear. Login with your virtualdj.com account. A **Pro Infinity** or a **PLUS License** is required to fully use the Behringer CMD DC-1. Without any of the above Licenses, the controller will operate for 10 minutes each time you restart VirtualDJ.

<http://www.virtualdj.com/buy/index.html>



A **detection** window will appear next to verify the proper USB connection.



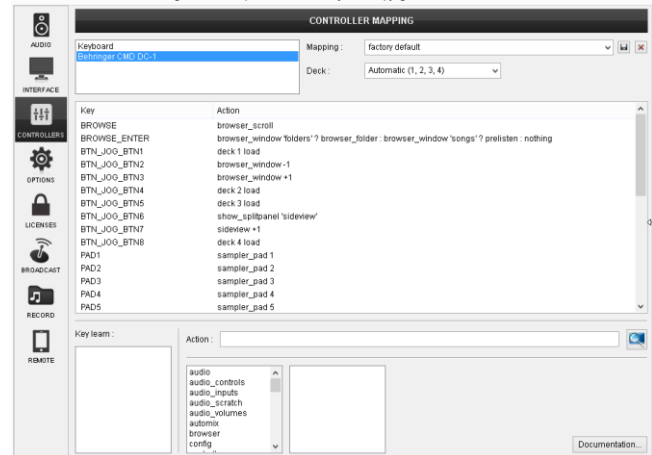
The unit is now **ready** to operate with VirtualDJ.

Advanced Setup

MIDI Operation

The unit should be visible in the CONTROLLERS tab of Config and the “factory default” available/selected from the Mappings drop-down list. The factory default Mapping offers the functions described in this Manual, however those can be adjusted to your needs via VDJ Script actions. Find more details at

<http://www.virtualdj.com/wiki/VDJscript.html>



AUDIO Setup

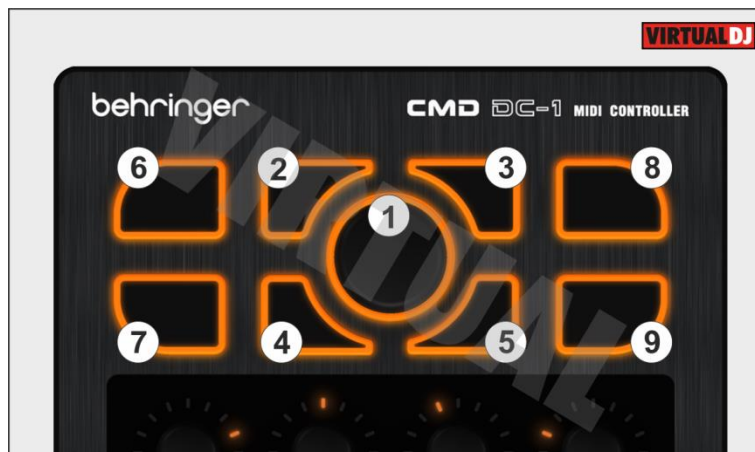
The unit does not have a built-in audio interface, therefore no Audio setup is required.

For further software settings please refer to the User Guides of VirtualDJ 8.

<http://www.virtualdj.com/wiki/PDFManuals.html>

B. BROWSER

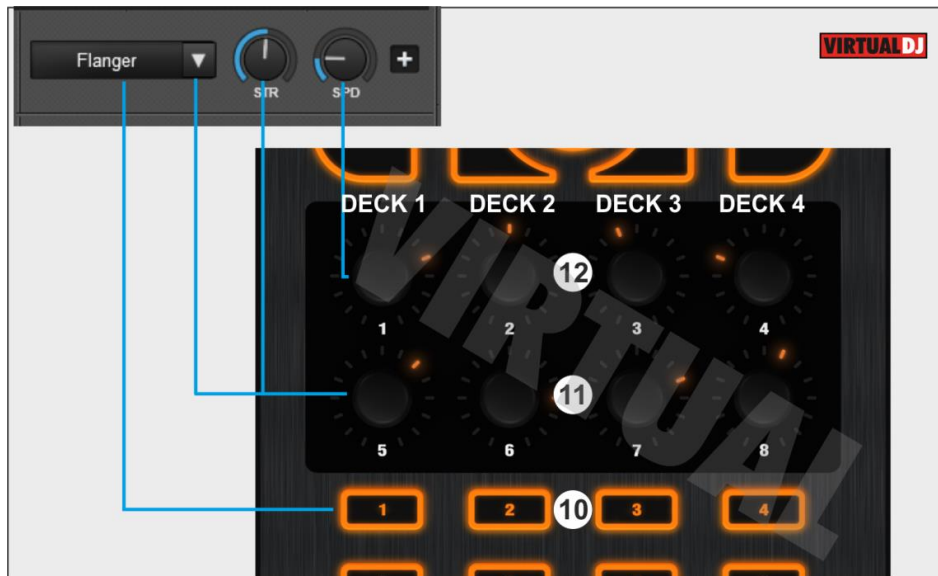
This section offers control of the VirtualDJ Browser



1. **BROWSER.** Turn the encoder to **scroll through files and folders**. If focus is on the Folders list, push the encoder to set focus to the Songs list. If focus is on any other Browser window, **push** the encoder to send the selected track to the **Prelisten Player**. While a track is playing on the Prelisten Player, use the encoder to control the **position of the Prelisten Player**
2. **FOLDERS.** Press this button to set focus to the **Folders list** of Browser. If focus is on the Folders list, use the same button to open/close subfolders.
3. **SONGS.** Press this button to set focus to the **Songs List** of Browser.
4. **SIDEVIEW.** Press this button to set focus to the **Sideview List**. Press and hold the button for more than 1 second to reveal/hide Sideview
5. **VIEW.** Press this button to **cycle through** the available **views of Sideview** (Automix, Sidelist, Karaoke, Sampler and Shortcuts).
6. **LOAD 1.** Press this button to **load** the selected track on **deck 1**. Press and hold the button for more than 1.5 seconds to **unload** the same deck.
7. **LOAD 3.** Press this button to load the selected track on **deck 3**. Press and hold the button for more than 1.5 seconds to **unload** the same deck
8. **LOAD 2.** Press this button to **load** the selected track on **deck 2**. Press and hold the button for more than 1.5 seconds to **unload** the same deck.
9. **LOAD 4.** Press this button to **load** the selected track on **deck 4**. Press and hold the button for more than 1.5 seconds to **unload** the same deck

C. EFFECTS

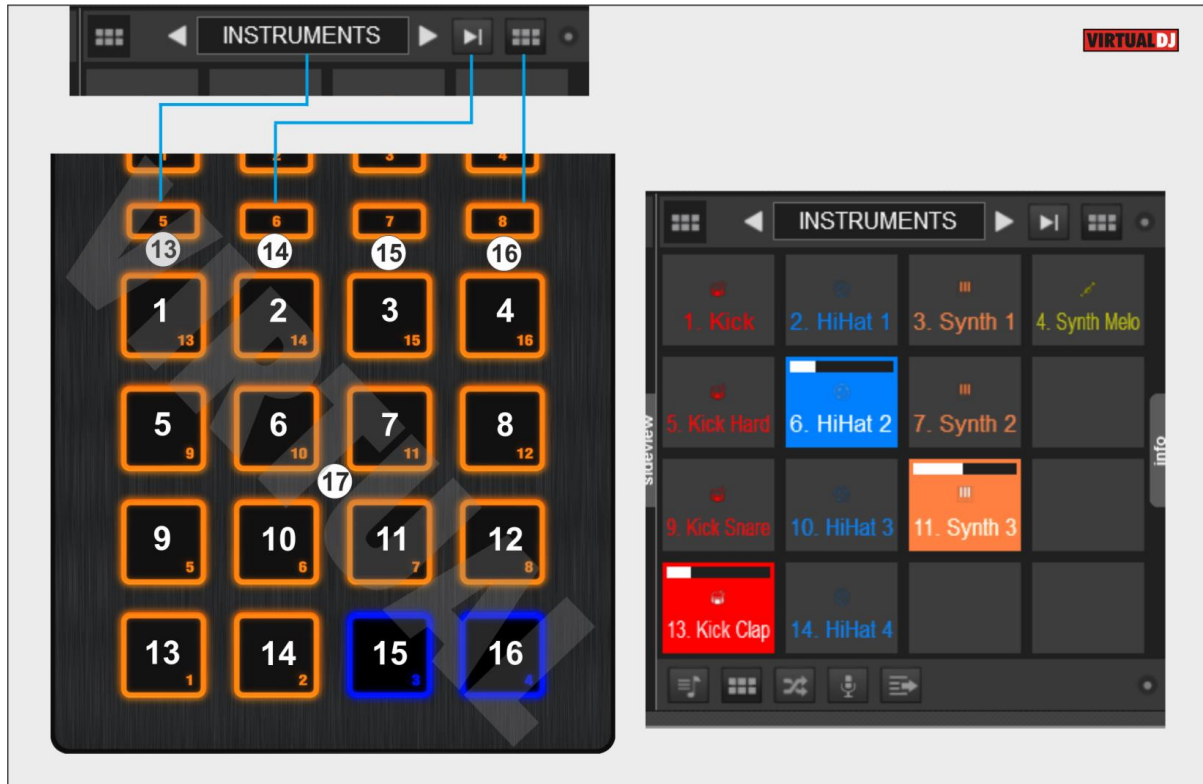
This section offers effects control for decks 1 to 4



- 10. FX ON:** Press this button to **activate** the selected **effect** on decks 1 to 4 respectively.
- 11. ENC BOTTOM:** Turn the encoder to **select** the previous/next effect for decks 1 to 4 respectively. If the effect is enabled, the same encoder controls the **1st parameter** of the selected effect.
- 12. ENC TOP:** Turn the encoder to control the **2nd parameter** of the selected effect for decks 1 to 4 respectively.

D. SAMPLER

This section offers control of the VirtualDJ 8 Sampler.



- 13. BANK:** Press this button to select the **next** available **Bank of Sampler**
- 14. MODE:** Press this button to select the **next Sampler Trigger Mode**. Cycles through On/Off, Hold, Stutter and Unmute.
- 15. PAGE:** Opens/closes Sideview and sets focus to the **Sampler view** of SideView.
- 16. SAMPLER VIEW:** Toggles between the **List** and the **Trigger Pad** views of Sampler
- 17. PADs.** Each one of the 16 buttons **triggers a Sample** as per the image above. If a sample slot is loaded, the led of the button will illuminate blue and will blink when the same sample is triggered.

Hardware Integration Department



2014 - ATOMIX PRODUCTIONS

Reproduction of this manual in full or in part without written permission from Atomix Productions is prohibited.